



Scot Gov Policy and Whole Farm Plans

Craig Bothwell



SAC

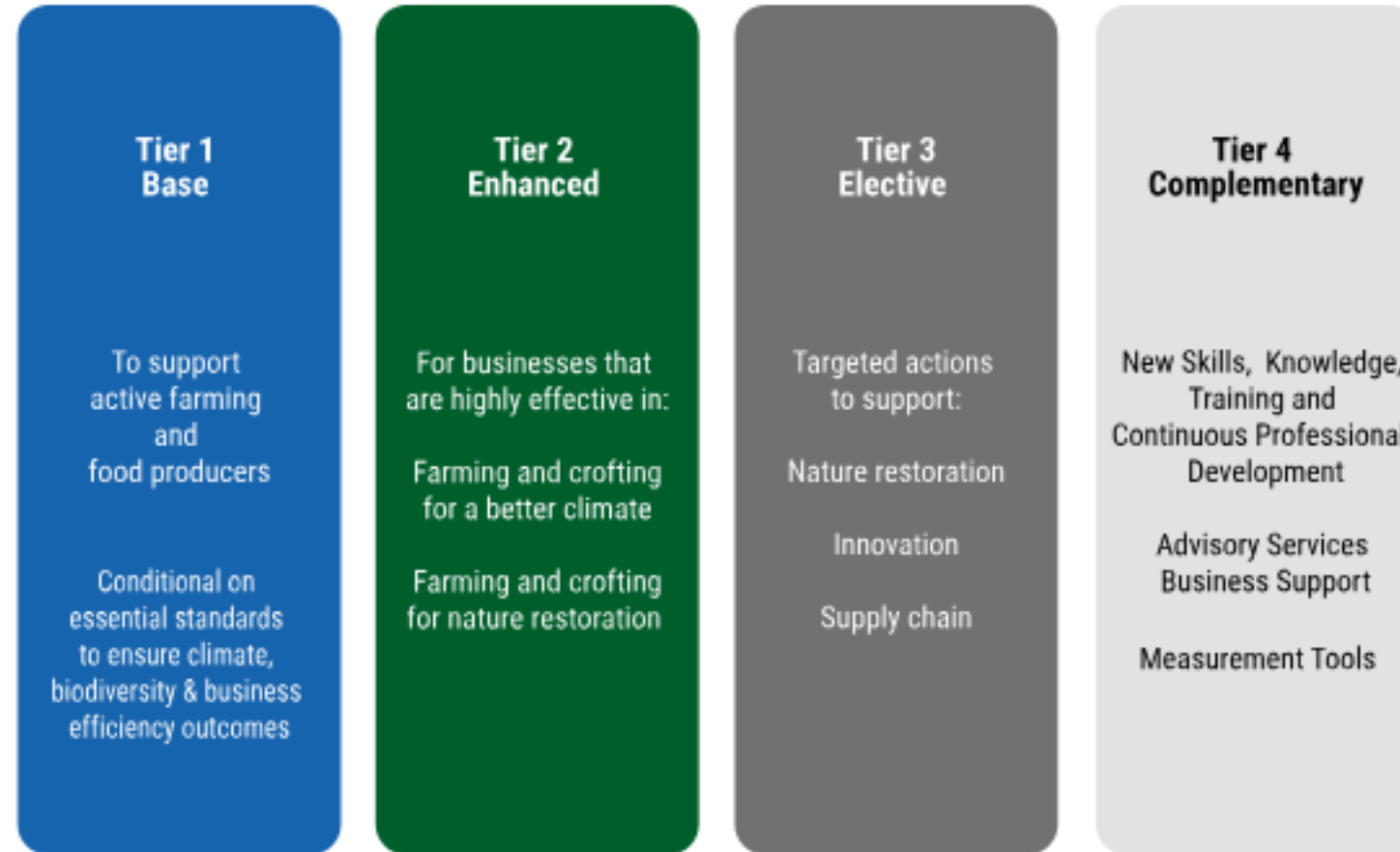
CONSULTING

Part of Scotland's
Rural College (SRUC)

2025 changes

- Cross Compliance/GAEC 6
- Whole Farm Plan
- Scottish Suckler Beef Support Scheme

Agriculture Support Package Beyond 2025



Existing Schemes

2025

2026

2027

Basic Payment Scheme

Continues with some changes from 2025 delivering Base Tier support including the introduction of the Whole Farm Plan

Young Farmer Payment

Continues with no change

Engagement required with farmers and crofters on how this type of support will be delivered from 2027

Greening

Continues with no change

Continues with some changes from 2026 delivering Enhanced Tier Support

Scottish Suckler Beef Support Scheme

Continues with some changes from 2025

Scottish Upland Sheep Support Scheme

Continues with no change

Engagement required with farmers and crofters on how this type of support will be delivered from 2027

Less Favoured Area Support Scheme

Continues with no change

Engagement required with farmers and crofters on how this type of support will be delivered from 2027

Agri-Environment and Climate Scheme Forestry Grant Scheme Targeted Capital Support (e.g. Crofting Agricultural Grant Scheme)

Continues with no change

Engagement required with farmers and crofters on how this type of support will be delivered from 2027

Preparing for Sustainable Farming

Support until end of 2024

Measure: Biodiversity cropping and silvo-arable systems

Descriptor:

Provision of Pollinator or Bird friendly crops with beetle banks, bird covers, conservation headlands, and field margins. To improve soil health and water quality and improve habitat conditions for pollinating insects, wild birds and small mammals.

Measure: Silvo-arable systems

Descriptor:

Plant trees at suitable interval for machinery in arable field to create silvo-arable systems, in order to improve carbon sequestration, minimise soil erosion, improve drainage, support more biodiversity. Species for coppicing, fruits, nuts or timber can provide marketable products will also improve profitability. To improve soil health and water quality and improve habitat conditions for pollinating insects, wild birds and small mammals.

Package: Crop Diversity - grassland

Measure: Diverse sward species content (legumes-herb-grass mixtures) and use of herbal leys

Descriptor:

Attain species diversity in existing rotational grass swards by over seeding or reseeded with diverse species grass mix; including drought tolerant or tussock forming grasses, deep rooting species, herbs and legumes. Along with ryegrass, use timothy, fescues, cocksfoot and herbal leys in rotational grassland (including species like chicory, yarrow, plantain, sainfoin, red/white/sweet/alsike clovers, birdfoot trefoil, burnet). To improve soil health and improve habitat conditions for pollinating insects, wild birds and small mammals.

Measure: Silvo-pastures

Descriptor:

Aim is to integrate trees and shrubs into an area of grass crop to benefit biodiversity, carbon sequestration, climate change adaptation, soil health, and livestock health. Trees should be planted in a manner that works with intended cropping or grazing management. During the establishment period (five years), trees will need to be protected from grazing by domestic livestock and wild animals. Suitable tree pruning and management will be needed until the trees are established. Maintaining management, including pruning, will enable both tree establishment and pasture sward to thrive together.

The Whole Farm Plan

You will be asked to confirm on your 2025 SAF that you have done at least 2 of these 5 activities:



Carbon audit



Biodiversity audit



Soil analysis



Animal health and welfare plan



Integrated pest management plan

Whole Farm Plan Elements 5-year validity



Carbon Audit

Desk based exercise using 12 months of farm data



Soil Analysis

pH, P, K and carbon required as a minimum for fields that are spread with fertiliser or manure



Biodiversity Audit

For 2025, this only involves creating a habitat map

Carbon Audit

- Applicable to all businesses
- Measures the carbon footprint of the enterprises that generate a saleable output on your farm. There are adaptations that can be made if you rent your land out.
- Need recommendations but not necessarily by an adviser
- Use AgRE Calc, Cool Farm Tool, Farm Carbon Calculator Tool or Solagro (JRC) Carbon Calculator
- You must retain a copy
- Funding available currently
 - £500 from Preparing for Sustainable Farming
 - £660 from Farm Advisory Service

If you already have one, check:

- No older than 5 years on 15/05/2025 (completed after 16th May 2020)

Everybody will need by 2028

Carbon Audit Funding

- Two streams available currently.
 - £500 – Preparing for Sustainable Farming (first audit or if your previous audit is now older than 3 years)
 - £660 – Farm Advisory Service (£330 for a repeat audit)
-
- Funding gives you access to an advisor for support.
 - For PSF – no need to apply in advance. After the work is complete and invoice is paid, submit evidence to claim the money back.
 - FAS requires pre-application process and grant is paid directly to your nominated advisor. The only money you pay out is the VAT element.



Soil Analysis

- Required for all region 1 land managed on a permanent basis that receives artificial fertilisers and/or organic manures.
- Not required for seasonal land
- Not all fields by 2025 but you must have started the process (all fields by 2028)
- If you claim Region 1 land but let the land out seasonally, soil analysis is required if your tenant applies artificial fertilisers and/or organic manure.
- Analysis must include pH level, Phosphate (P), Potash (K) and Carbon as a minimum.
- You must retain a record of the soil analysis results
- You must keep a record of the actions taken as a result of your soil analysis
- **If you plan to use existing analysis:**
 - You do not need carbon analysis if taken before 1st July 2024





Soil Analysis Funding

- If you have a qualifying carbon audit or are going to complete a carbon audit in 2024, you can access funding through the Preparing for Sustainable Farming scheme.
- A carbon audit must have been completed in the last 3 years to qualify.
- You will be paid on actual costs up to a maximum allowance.

Maximum funding allowance is based on £30/ha across 20% of the Region 1 land that you claim on your SAF.

Region 1 claimed land	20% of claimed area	Payment rate per ha	Max soil sampling allowance
100ha	20	£30.00	£600.00

Analysis requires pH, P, K and Carbon

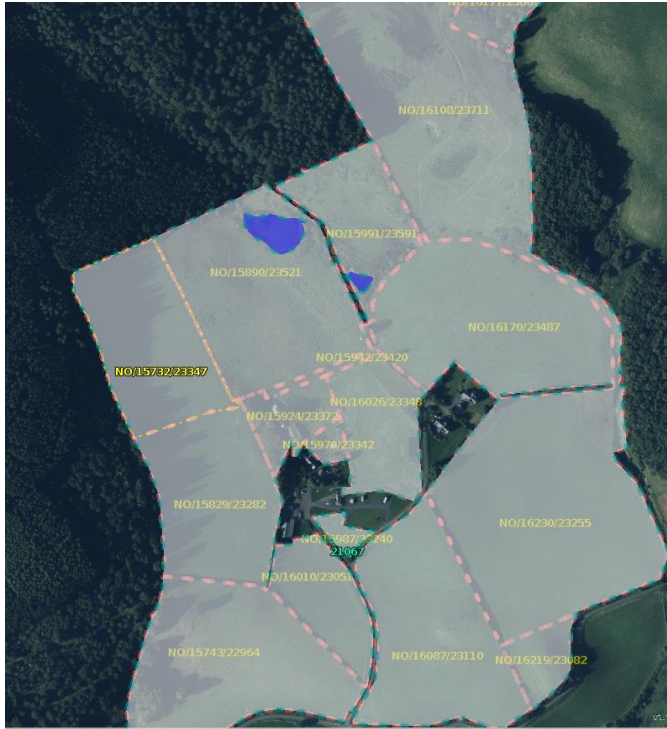
To claim, you need analysis documents, fertiliser recommendations, invoice and copy of bank statement to show transaction



Biodiversity Audit

- Create a Habitat Map for all land (including white land but not seasonal land)
- Select a habitat from the key that best describes the majority of land cover for each field and mark all individual features
Key available to help
- Don't worry about incurring penalties if you get the habitat type incorrect; the map is for your use, and can be amended in future if it is found to be incorrect
- If you have a supply chain biodiversity audit, make sure it includes a map. Not all will but where a supply chain audit meets the minimum standard, it will be accepted.

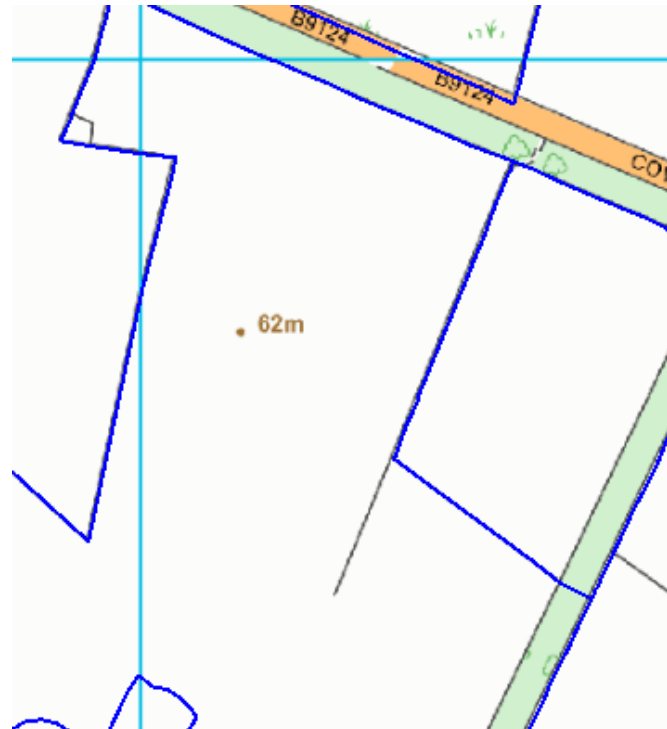
3 ways to complete a biodiversity audit



RP&S Habitat Layer

Need login details for RP&S

Open Map under Locations header
and use Edit Habitats menu



Annotated Paper Map

Would need to be uploaded to
your 2025 SAF form



Biodiversity Audit App

Not available until 2025 –
undergoing testing with a
select group of farmers
currently

Whole Farm Plan Elements 1 year validity



Animal Health and Welfare Plan

Written document

Applicable to most livestock businesses but only needed for poultry if greater than 350 head



Integrated Pest Management Plan

Applicable to all businesses that use sprays

Grass and Arable options

Animal Health and Welfare Plan

- Documented plan
- Does not need to be signed off by a vet but vet must have visited in the last 12 months (invoice or veterinary attestation to prove)
- Read the minimum standards – in summary:
 - Your contact details as well as the vets
 - Types and numbers of livestock; details of breeding stock and livestock born
 - Disease risk assessment and management plan
 - Livestock health management calendar
 - Fallen stock management info
 - Euthanasia policy
- **If you already have one, check:**
 - It meets the minimum standards (QMS audits for example)
 - It is in date!





Integrated Pest Management Plan

- Online survey
- Applicable to grassland and arable businesses as long as you use sprays (plant protection products)
- Different depending on whether arable or grass is your main crop
- Search 'plant health centre IPM' into a search engine
- SQC or other supply chain audits are okay to be used providing they are in date (no more than 1 year old)

Scottish IPM Plan and Assessment

Complete this plan if you farm Arable crops, field-scale vegetables, forage and potato crops

Please answer the questions as accurately as you can. Good data is needed to provide you with a realistic measure of the adoption of IPM by your business.

- Please note that the term 'pests' relates to diseases, weeds and invertebrate pests (insects, nematodes, slugs and snails).
- Please read question instructions carefully as the type of response required may vary from question to question.
- Please complete the survey in full

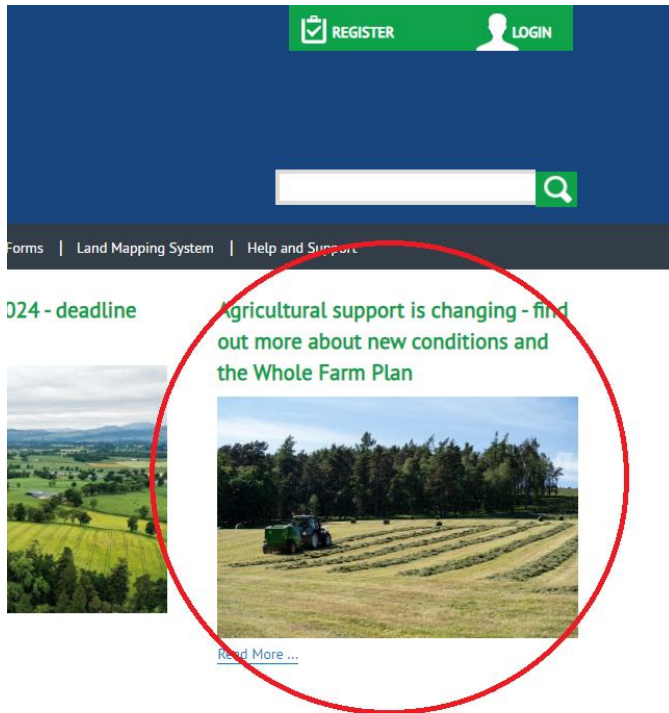
1. How familiar are you with Integrated Pest Management (IPM)?

Please tick one answer only.

- Not at all familiar (if this answer, please go to Question 3.)
- Somewhat unfamiliar
- Moderately familiar
- Familiar
- Very familiar

Guidance – Rural Payments and Services website

This is being updated regularly



www.ruralpayments.org

Far right icon on the homepage

[Home](#)

The future of agricultural support

Agricultural support is changing. Find out more about changes from 2025

[Agricultural Reform Route Map](#)

More information on the changes recipients of current farm payments will be expected to make from 2025 and when more information will be available.

[Preparing for Sustainable Farming full guidance](#)

Full scheme guidance for Track One carbon audit and soil sampling

[Agricultural Reform List of Measures](#)

Information on the draft list of measures for the Agricultural Reform Programme.

[Whole Farm Plan](#)

Information and guidance for farmers and crofters on the Whole Farm Plan requirements

[Agriculture Reform Glossary](#)

Glossary of terms used in the Reform Route Map and List of Measures

Whole Farm Plan Sub-menu

Preparing for Sustainable Farming funding and reform route map is on the same webpage

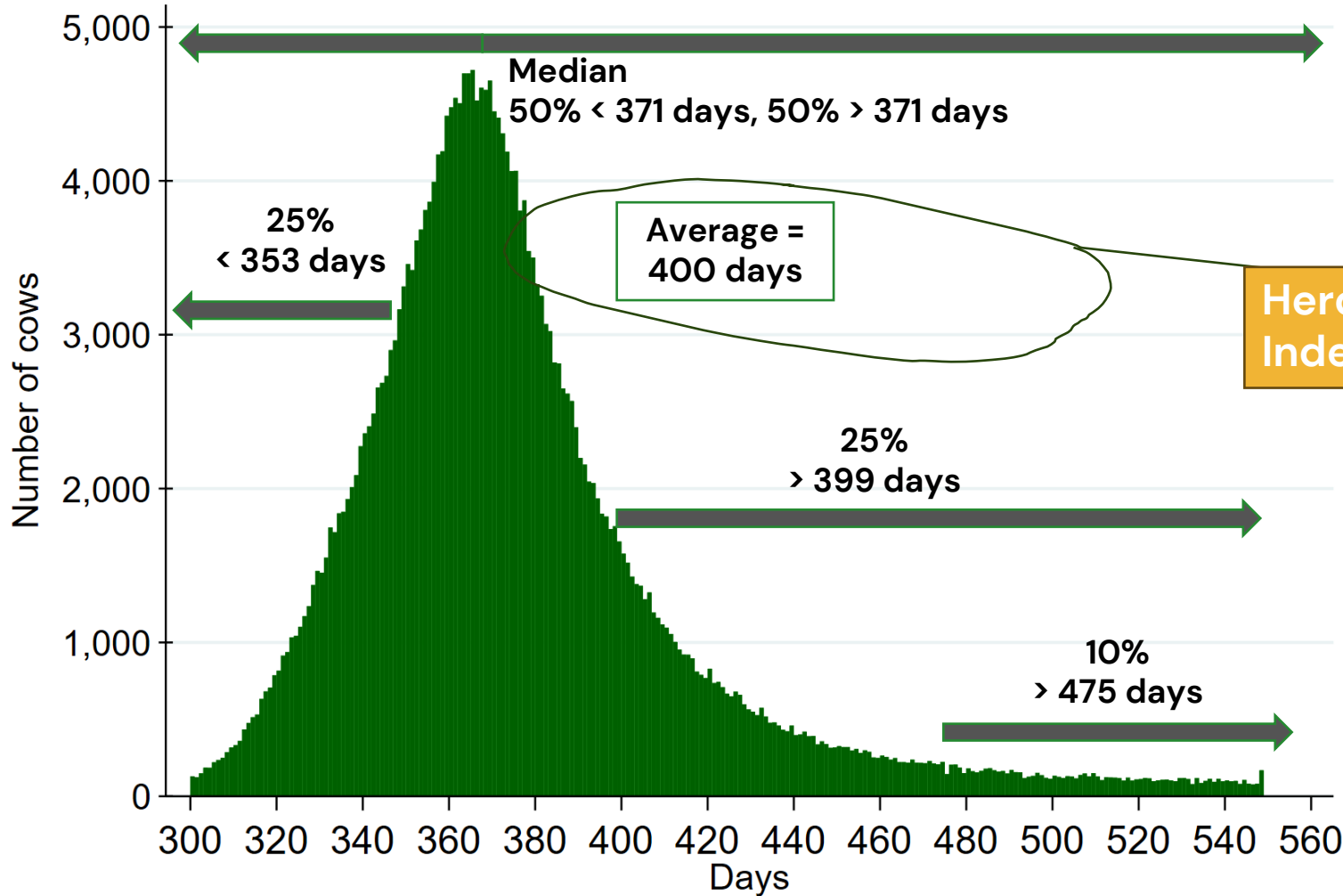
Beef Calf Scheme changes (SSBSS)

- From 2025 onwards, calves will only be eligible for this payment if their dam has a calving interval threshold of 410 days or less
 - OR
- if the calf is the first registered birth associated with that dam.
- The new condition will be measured on an individual animal basis not on herd averages
- No changes to how you apply for the payment. No additional information required.



Calving Interval – Scotland

Beef farms - Calving Intervals of Cows 2022 (330-550 days)



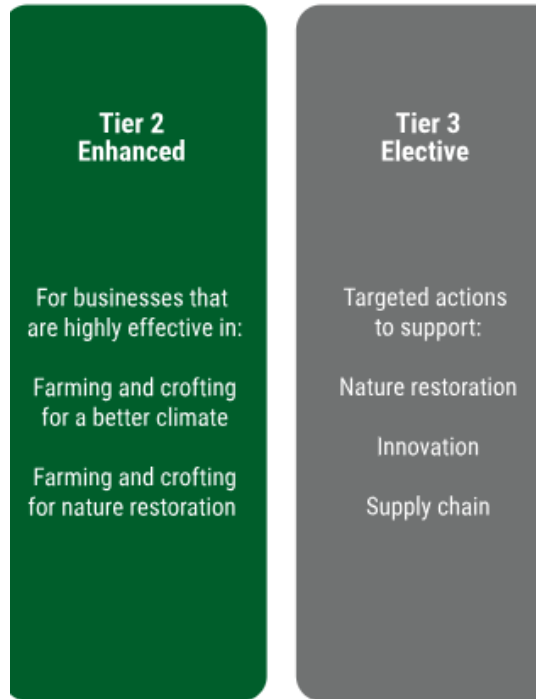
Herd Index!

Don't fret about herd index! – empty cows can affect it in a big way!
– But do think about carrying passengers & getting bulls tested!



Timelines for info for 2026 and beyond

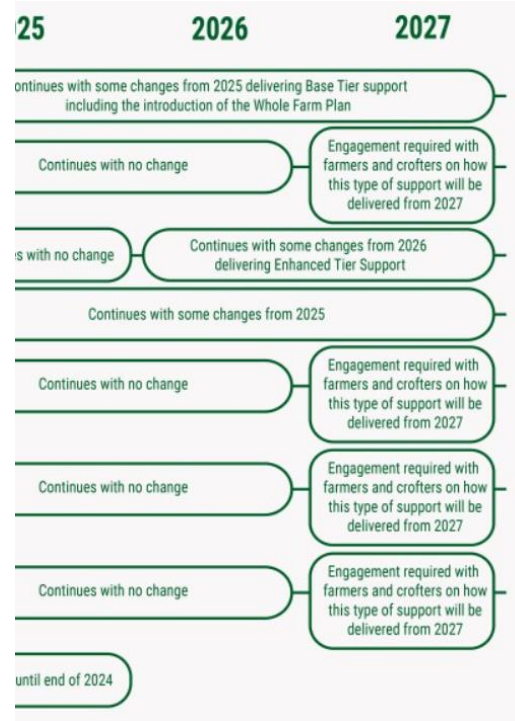
Check out the Route Map tab on the guidance for full details



Jan – March 2025

Detailed conditionality for enhanced support

What elective support will be available in 2026



April – June 2025

Guidance for all support available in 2026

Information on any new support and any anticipated changes to existing support that will happen in 2027



July – Sept 2025

Guidance on Complementary Support in 2026



Oct – Dec 2025

Budget for support in 2026