



Forestry Grants

David Eadie: SAC Forestry Consultant

Boghall Farm: 10 October 2024



Woodland Creation Forestry Grants

Introduction

- Grants are awarded through Scottish Government Agency Scottish Forestry previously Forestry Commission.
- Grant Contract is for a period of 20 years
- You can't plant what you want but need to use one of the models available
- Biomass Crops or Short Rotation Forestry are not eligible for Forestry Grants

Timber Products

Example From a single mature tree

Most valuable product to least valuable

1. Sawlogs, timber construction, base of the tree up to approximately 18cm
2. Fencing Material
3. Pallet Wood
4. Shaving Bars
5. Firewood
6. Chipwood or Biomass
7. Branches for Biomass
8. Stumps

Grants

Woodland Creation option	Payment rates in standard areas			Payment rates in target areas		
	Initial planting payment rate (£/ha)	Annual maintenance payment rate (£/ha/year) for five years *	Total payment rate (£/ha)	Initial planting payment rate (£/ha)	Annual maintenance payment rate (£/ha/year) for five years *	Total payment rate (£/ha)
Conifer	1920	208	2960	2160	234	3330
Diverse Conifer	2160	336	3840	2430	378	4320
Broadleaves	2880	528	5520	3240	594	6210
Native Scots Pine	1840	272	3200	2070	306	3600
Native Upland Birch	1840	128	2480	2070	144	2790
Native Broadleaves	1840	272	3200	2070	306	3600
Native Low-density Broadleaves	560	96	1040	630	108	1170
Small or Farm Woodland	2400	400	4400	2700	450	4950
Native Broadleaves in Northern and Western Isles	3600	624	6720	4050	702	7560

Woodland Creation – Grant Options

6 Options-

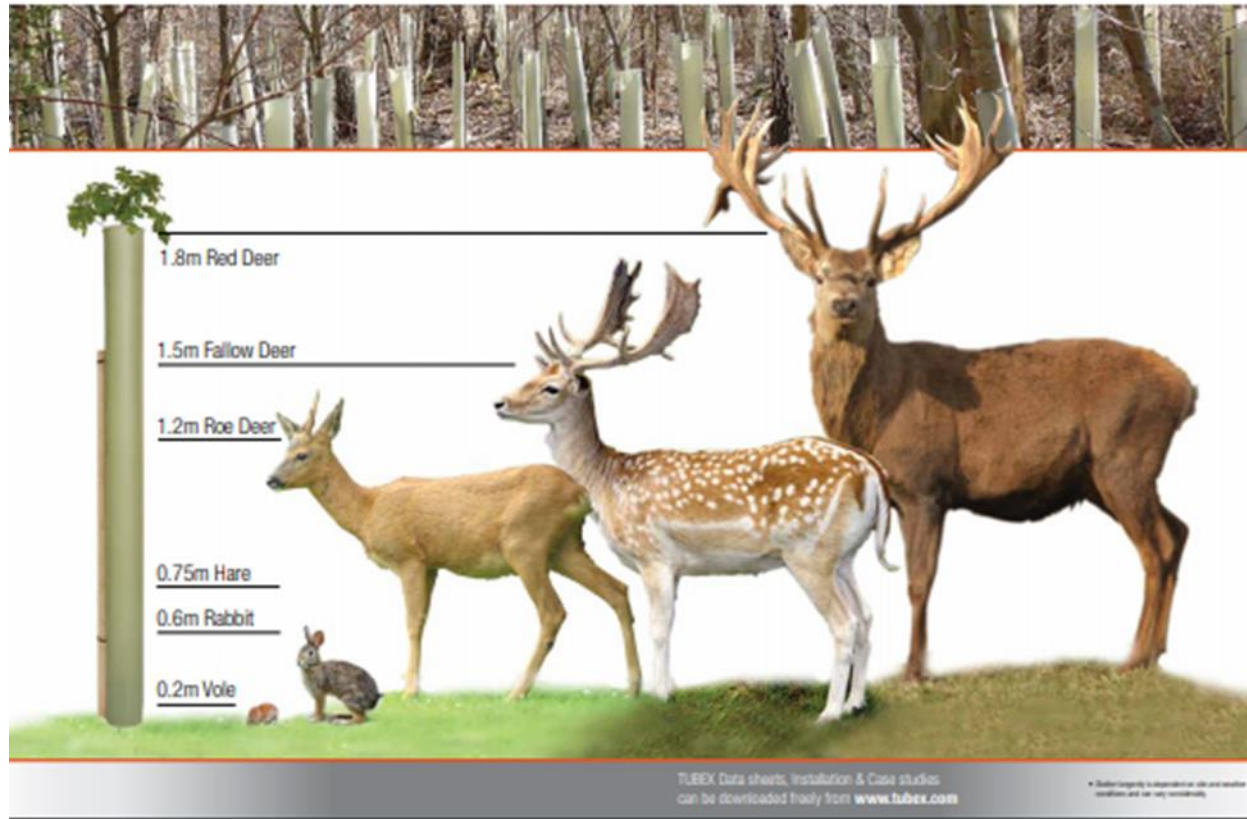
- Conifer £3,330.00 per ha
- Diverse Conifer £4,320.00 per ha
- Broadleaves £6,210.00 per ha
- Native Upland Birch £2,480.00 per ha
- Native Broadleaves £3,200.00 per ha
- Small/ Farm Woodland £4,400.00 per ha

Woodland Creation – Capital Items

- Deer Fence **INCREASED** to £9.90 per metre all areas
- Stock Fence £4.40 per metre
- Rabbit Net to Deer or Stock Fence £1.60 per metre
- Gates, Vehicle £172 each or Pedestrian £280 each
- Tree Shelters depending on size £1.16 to £2 each.
- Vole Guards £0.19 each
- Bracken Control **INCREASED** to £720/ ha
- Gorse Removal £720/ ha
- CSGN top up grant £2,500/ £1,500 & £750 per ha all Scotland.

Tree Tubes

Size Guide



Central Scotland Green Network CSGN Area



Woodland Creation – Constraints

- Tenant Farm, Landlord need to sign form
- Protected Sites eg SSSI
- Archaeology
- Deep Peat over 500mm deep
- Shallow soils 200mm or shallower

Woodland Constraints cont.

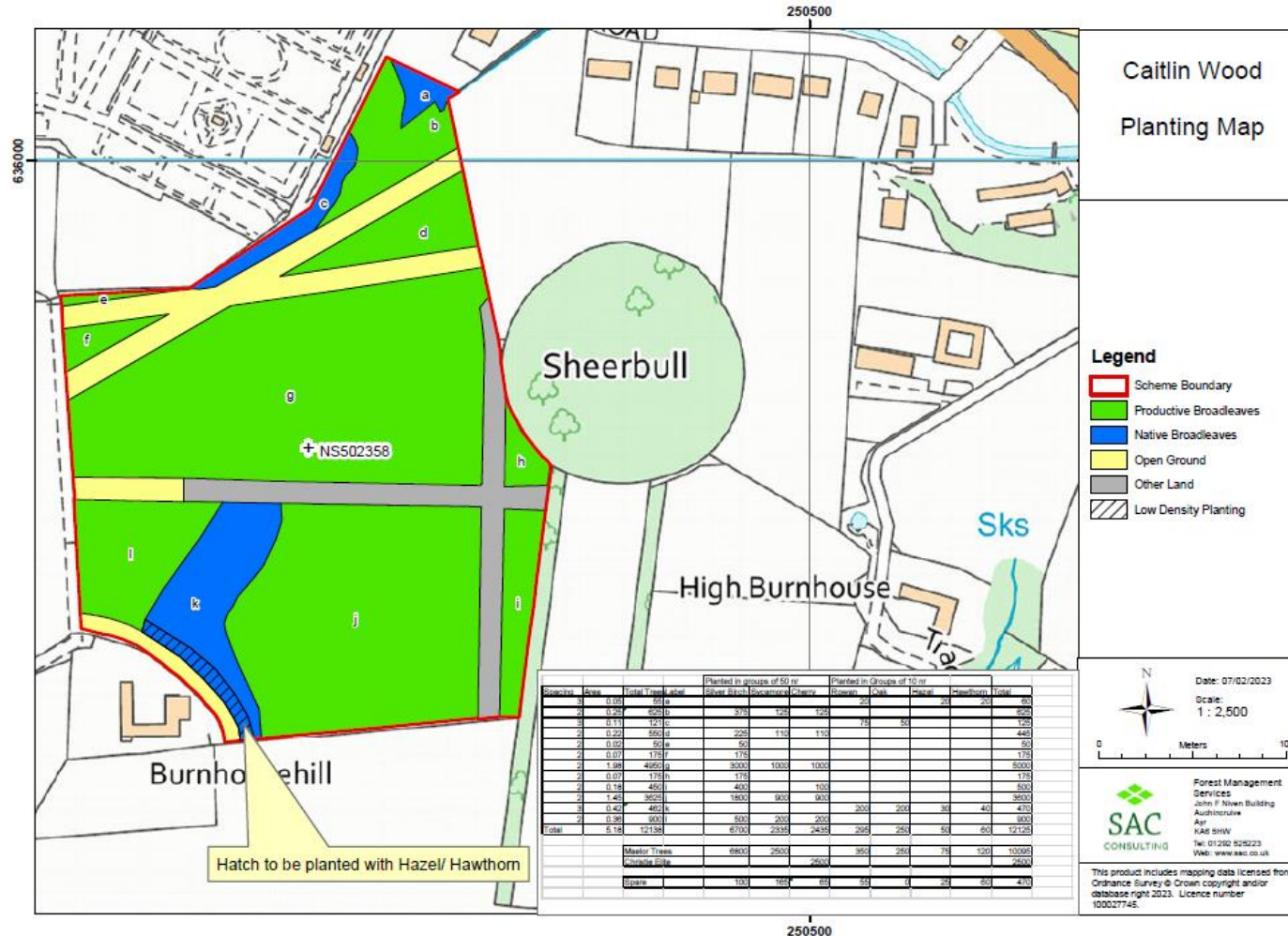
- Proposals need to be 15m or wider.
- Each block needs to be 0.25 ha or greater.
- Some open ground can be included up to 15% depending on the model chosen.
- Species choice has to be in line with the model chosen, i.e. Beech can't be planted in Native Schemes.
- Restrictions to how much capital grants i.e. fencing you can get with planting.



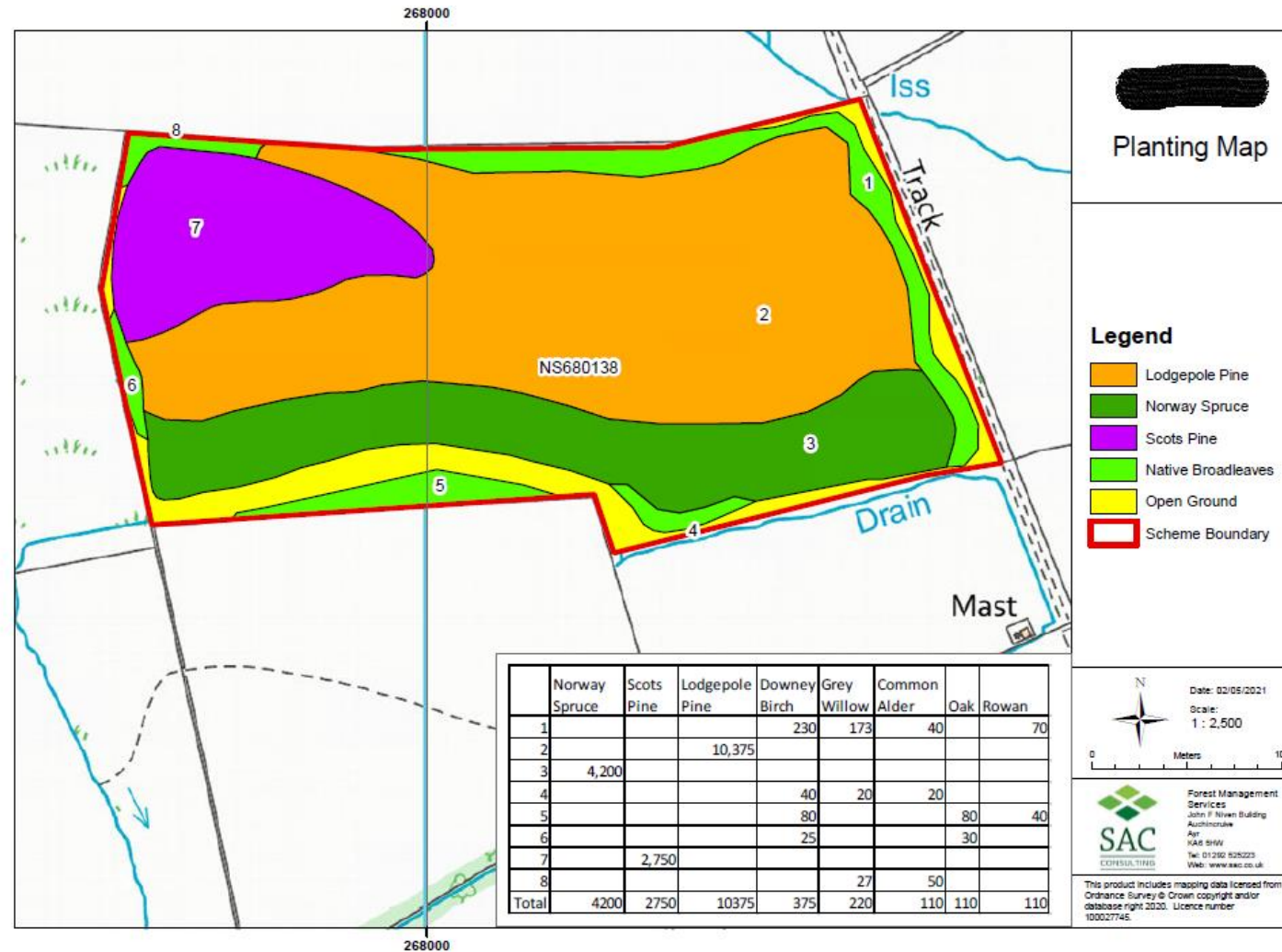
What works

- Depends what area you are in
- What Model you want to use
- How big the scheme is

What works



Example 2



Example 2

SAC CONSULTING
WOODLANDS UNIT
INDICATIVE CASH FLOW FORECAST



Diverse Conifer 8.53 ha
Deer Fence with Rabbit Net 1,280 metres
Deer Gates 2

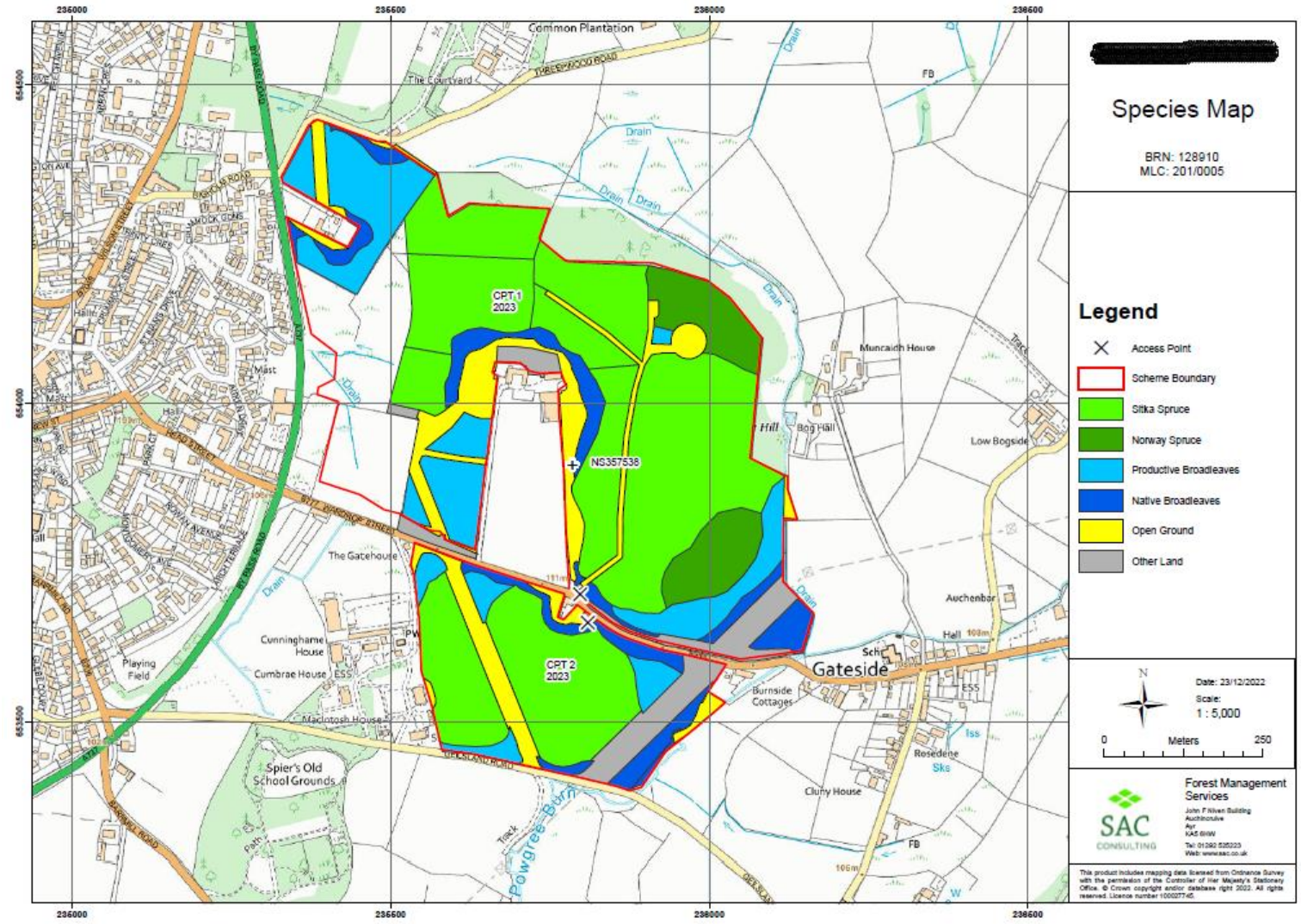
All prices shown are before VAT

ESTABLISHMENT COSTS	2020/21	2021/22	2022/23	2023/24	2024/25	2025/26	TOTALS
Deer Fencing	£ 14,026.00						£ 14,026.00
Mounding & Drainage	£ 3,996.58						£ 3,996.58
Plants and Planting	£ 8,922.38						£ 8,922.38
Tree shelters/guards	£ 307.08	£ 9.21					£ 316.29
Weeding	£ 1,501.28	£ 1,501.28	£ 1,501.28	£ 1,501.28			£ 6,005.12
Replace losses	£ 907.59	£ 456.36	£ 228.18				£ 1,592.12
Sundries/ contingencies	£ 1,483.05		£ 86.47				£ 1,569.52
Supervision	£ 4,000.00	£ 1,040.00	£ 1,040.00	£ 800.00	£ 800.00		£ 7,680.00
Professional Fees	£ 2,000.00						£ 2,000.00
VAT (if not registered)							
TOTAL COSTS	£ 37,143.95	£ 3,008.85	£ 2,855.93	£ 2,301.28	£ 800.00	£ -	£ 46,108.01

INCOME							
Planting & maintenance	£ 20,727.90	£ 3,224.34	£ 3,224.34	£ 3,224.34	£ 3,224.34	£ 3,224.34	£ 36,849.60
Shelters, gorse, bracken control	£ 194.48						£ 194.48
Wildlife fencing	£ 11,948.00						£ 11,948.00
TOTAL INCOME	£ 32,870.38	£ 3,224.34	£ 3,224.34	£ 3,224.34	£ 3,224.34	£ 3,224.34	£ 48,992.08

NET INCOME (EXPENDITURE)	-£ 4,273.57	£ 217.49	£ 368.41	£ 923.06	£ 2,424.34	£ 3,224.34	£ 2,884.07
CUMULATIVE INCOME (EXPENDITURE)	-£ 4,273.57	-£ 4,056.08	-£ 3,687.67	-£ 2,764.61	-£ 340.27	£ 2,884.07	£ 2,884.07

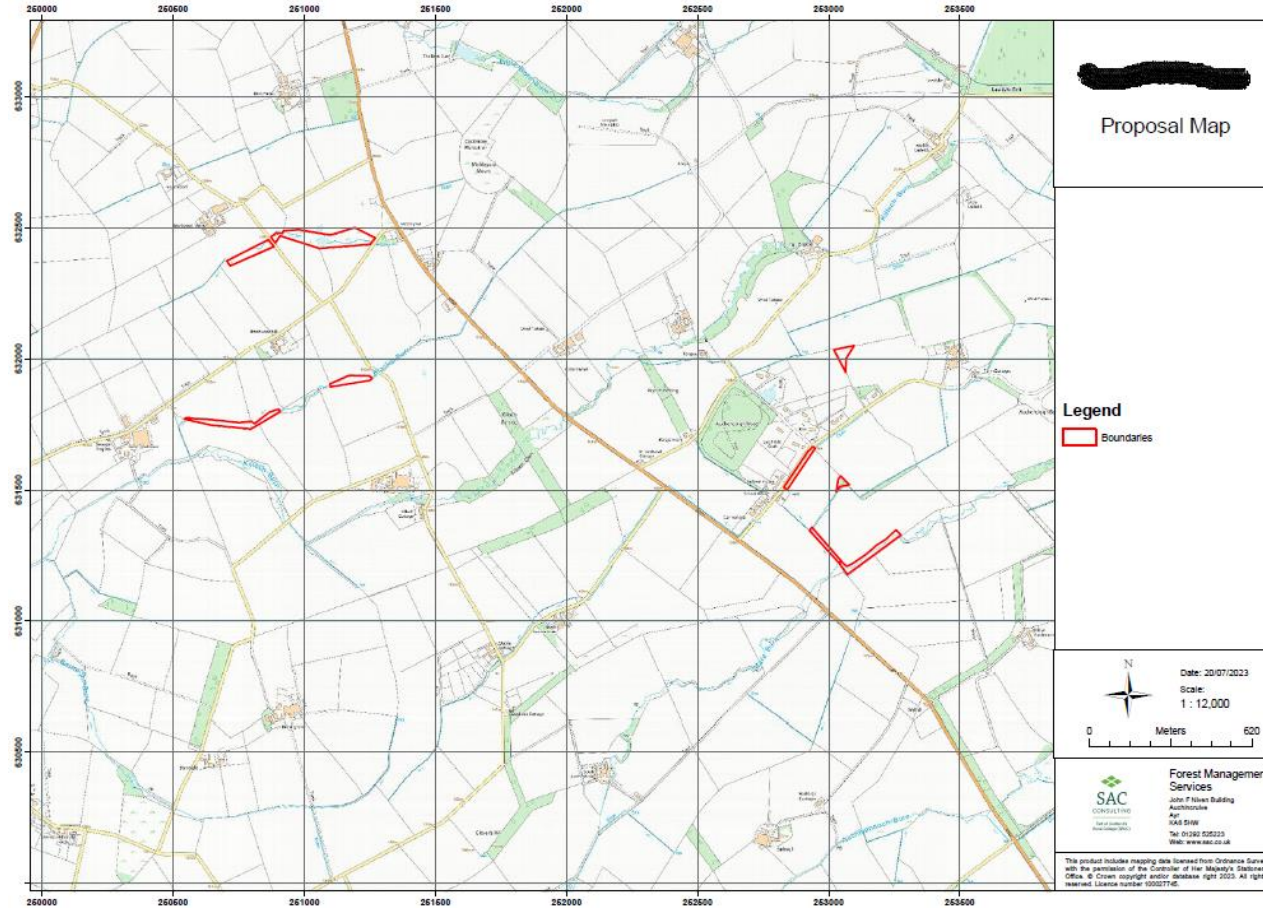
Example 3



What does not work Financially



Example 1



Example 1

SAC CONSULTING WOODLANDS UNIT INDICATIVE CASH FLOW FORECAST							
Native Broadleaves 4.83 ha							
Stock fencing 2088 metres							
Stock Gates 7 nr							
Tree Tubes 6,569 nr							
	All prices shown are before VAT						
ESTABLISHMENT COSTS	2022/23	2023/24	2024/25	2025/26	2026/27	2027/28	TOTALS
Stock Fencing	£19,498.00						£ 19,498.00
Mounding & Drainage	£ 2,052.75						£ 2,052.75
Plants and Planting	£ 4,072.66						£ 4,072.66
Tree shelters/guards	£20,100.53	£ 603.02					£20,703.54
Weeding	£ 853.94	£ 853.94	£ 853.94	£ 853.94			£ 3,415.78
Replace losses	£ 1,412.29	£ 873.65	£ 436.83				£ 2,722.77
Sundries/ contingencies	£ 2,399.51	£ 116.53	£ 64.54	£ 42.70			£ 2,623.27
Supervision							
Professional Fees							
TOTAL COSTS	£50,389.68	£ 2,447.14	£ 1,355.31	£ 896.64	£ -	£ -	£ 55,088.77
INCOME							
Planting & maintenance	£16,132.20	£ 1,313.76	£ 1,313.76	£ 1,313.76	£ 1,313.76	£ 1,313.76	£22,701.00
Shelters, gorse, bracken co	£13,137.60						£ 13,137.60
Stock Fencing	£ 9,187.20						£ 9,187.20
TOTAL INCOME	£38,457.00	£ 1,313.76	£ 1,313.76	£ 1,313.76	£ 1,313.76	£ 1,313.76	£45,025.80
NET INCOME(EXPENDITURE)	-£ 11,932.68	-£ 1,133.38	-£ 41.55	£ 417.12	£ 1,313.76	£ 1,313.76	-£ 10,062.97
CUMULATIVE INCOME (EXPENDITURE)							
	-£ 11,932.68	-£ 13,066.06	-£ 13,107.61	-£ 12,690.49	-£ 11,376.73	-£ 10,062.97	-£ 10,062.97



Example 2



Example 2

SAC CONSULTING
WOODLANDS UNIT
INDICATIVE CASH FLOW FORECAST



[REDACTED]
 Native Broadleaves 0.75 ha
 Protection Tree Tubes
 Contractor Carry out the work

All prices shown are before VAT

ESTABLISHMENT COSTS	2020/21	2021/22	2022/23	2023/24	2024/25	2025/26	TOTALS
Mounding & Drainage	£ 500.00						£ 500.00
Plants and Planting	£ 683.43						£ 683.43
Tree shelters/guards	£ 2,968.52	£ 89.06					£ 3,057.58
Weeding	£ 150.00	£ 150.00	£ 150.00	£ 150.00			£ 600.00
Replace losses	£ 216.77	£ 133.12	£ 66.56				£ 416.45
Sundries/ contingencies	£ 225.94		£ 10.83				£ 236.76
Supervision	£ 1,000.00	£ 250.00	£ 250.00	£ 250.00			£ 1,750.00
Professional Fees	£ 1,000.00						£ 1,000.00
TOTAL COSTS	£ 6,744.66	£ 622.18	£ 477.39	£ 400.00	£ -	£ -	£ 8,244.23

INCOME							
Planting & maintenance	£ 2,505.00	£ 204.00	£ 204.00	£ 204.00	£ 204.00	£ 204.00	£ 3,525.00
Shelters, gorse, bracken control	£ 2,070.00						£ 2,070.00
TOTAL INCOME	£ 4,575.00	£ 204.00	£ 204.00	£ 204.00	£ 204.00	£ 204.00	£ 5,595.00

NET INCOME (EXPENDITURE)	-£ 2,169.66	-£ 418.18	-£ 273.39	-£ 196.00	£ 204.00	£ 204.00	-£ 2,649.23
CUMULATIVE INCOME (EXPENDITURE)	-£ 2,169.66	-£ 2,587.84	-£ 2,861.23	-£ 3,057.23	-£ 2,853.23	-£ 2,649.23	-£ 2,649.23

Woodland Creation other grants options

- Woodland Trust
- Free Tree Packages
- MOREwoods
-
- Small Scale Planting Grant South Scotland
- Up to £1,000 Funding
- Dumfries & Galloway Council
- Borders Council

Thank You for listening

- Questions?

